

avenlur

Walnut Monkeybar 79in by Avenlur



Need Help?

CALL US AT 888.697.3931 / M-F 9AM - 5PM PT (12PM - -8PM ET)
OR EMAIL US AT INFO@AVENLUR.COM

V2

WARNING

Adult assembly required.


WARNING

Maximum user weight: 220 lbs (100kg) per child.

WARNING

CHOKING HAZARD:

Adult assembly required. Keep small assembly parts out of reach of children.

 Use under adult supervision.

OBSERVE ALL STATEMENTS AND WARNINGS TO REDUCE THE LIKELIHOOD OF SERIOUS OR FATAL INJURY. SAVE THIS SHEET FOR FUTURE REFERENCE.

OPERATION INSTRUCTIONS

1. An adult should always supervise use of this product by children of all ages.
2. Instruct children not to attach items to the playground equipment that are not specifically designed for use with the equipment (examples: ropes, clothesline, pet leashes, cables and chain, etc) as they may cause a strangulation hazard or any other hazard.
3. Never allow children to use the equipment in a manner other than intended.

MAINTENANCE INSTRUCTIONS

1. Inspect the product periodically for loose or damaged components. **Tighten bolts if need.**
2. Check all connections and bolts for tightness at least twice monthly during the usage.
3. Check all coverings and bolts for sharp edges.

INSTALLATION INSTRUCTIONS

Please have an electrical drill available for assembly if possible.

If you have difficulty in installation, please contact us for help and get installation video for reference.

Please Ensure:

1. You are assembling with at least two people to ensure that all sides and parts are leveled.
2. You don't screw the parts in too hard or it will splinter the wood.
3. You follow the directions carefully.

CONTACT US BEFORE ASSEMBLY IF:

- You need assistance with assembly
- You need a replacement part due to a missing part or defective part

Call us at 888-697-3931 M-F 9AM-5PM PT

or email us at info@avenlur.com



① ×1 39.5in



② ×1 39.5in



③ ×1 39in



④ ×1 39.5in



⑤ ×1 39.5in



⑥ ×1 39.5in



⑦ ×1 39in



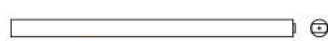
⑧ ×1 39.5in



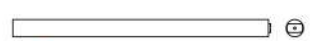
⑨ ×2 21.5in



⑩ ×5 21.5in



⑪ ×4 22in



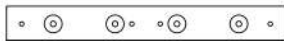
⑫ ×12 20in



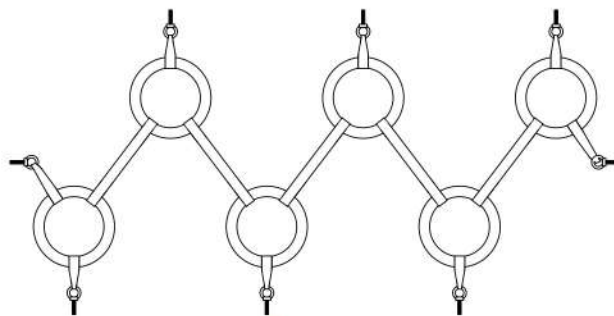
⑬ ×2 39in



⑭ ×2 39in



⑮ ×2 21.5in



⑯ ×1



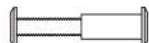
M7×50
① ×60



M8×50
② ×4



M8×20
③ ×8



M6×20 M6×20
④ ×8



M6×80 M6×20
⑤ ×8



M8×100
⑥ ×4



M8
⑦ ×8



M8
⑧ ×8



M10×40
⑨ ×8



M35
⑩ ×8



13mm
⑪ ×2



4mm
⑫ ×2



M10×25
⑬ ×2



M4.5×80
⑭ ×1



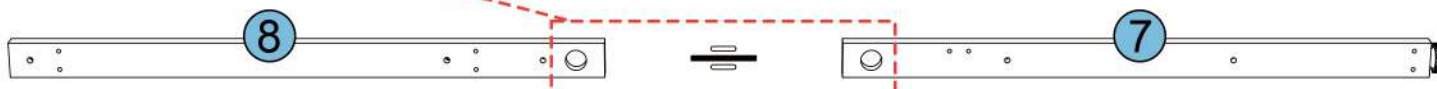
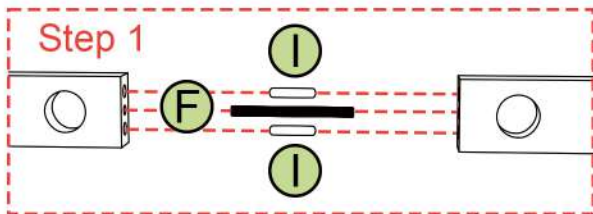
M6×60
⑮ ×8



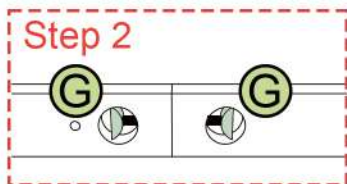
5mm
⑯ ×1

01-1

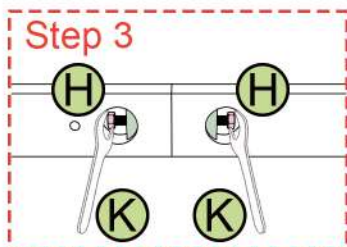
Step 1



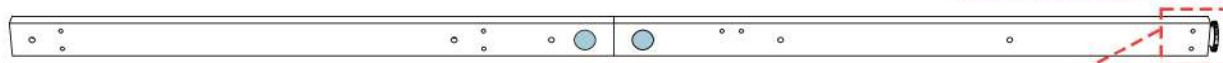
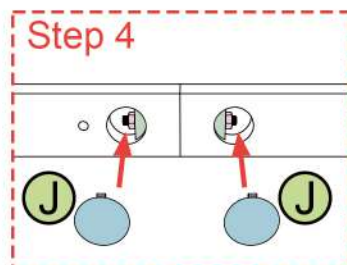
Step 2



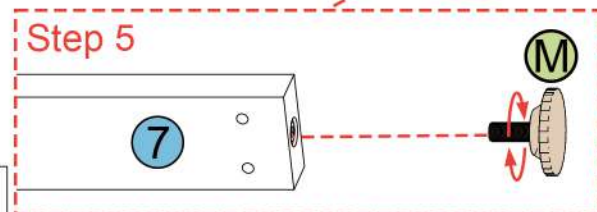
Step 3



Step 4



Step 5

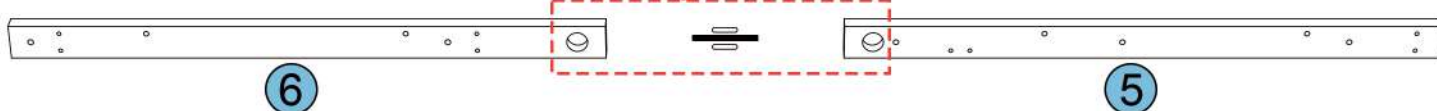
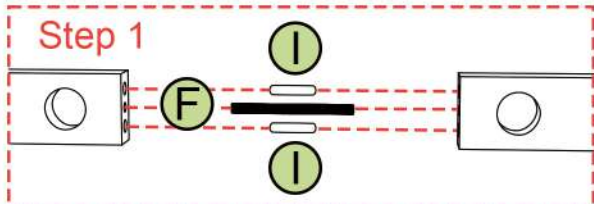


F	M8×100	1	G	M8	2	J	M35	2
I	M10×40	2	H	M8	2	K	13mm	2
			M	M10×25	1			

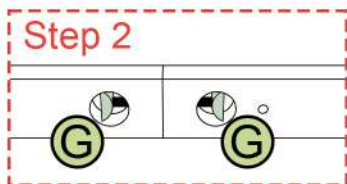
01-2

Note: Pay attention to all the black bubbled section markers. The manual may refer back to those later.

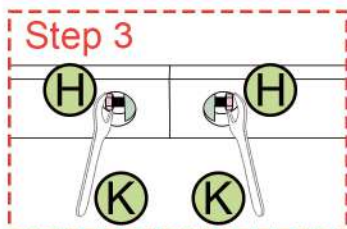
Step 1



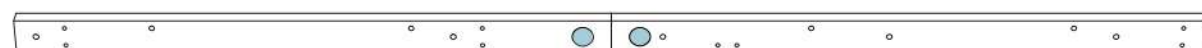
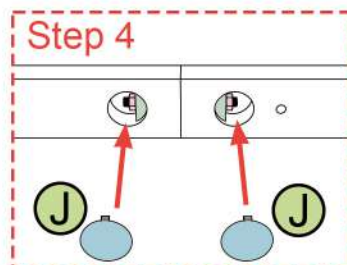
Step 2



Step 3

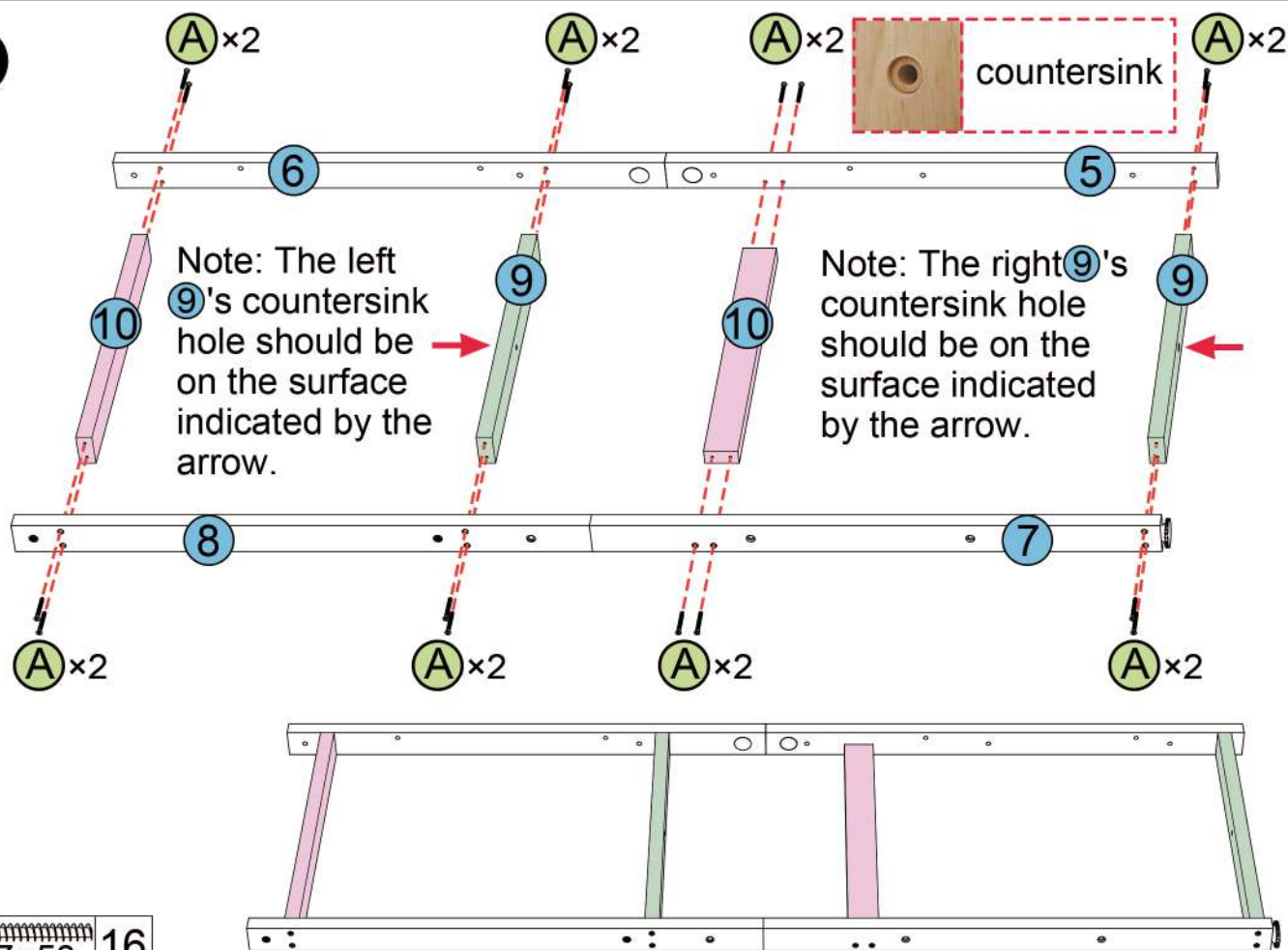


Step 4



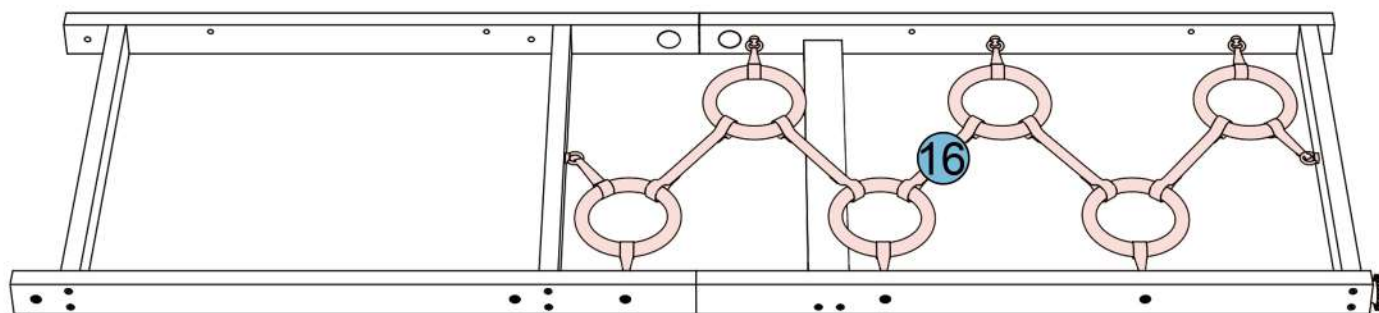
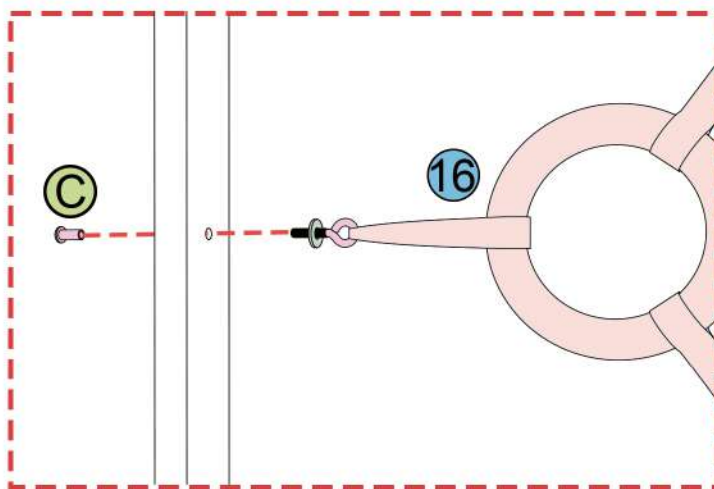
F	M8×100	1	G	M8	2	J	M35	2
I	M10×40	2	H	M8	2	K	13mm	2

01-3



01-4

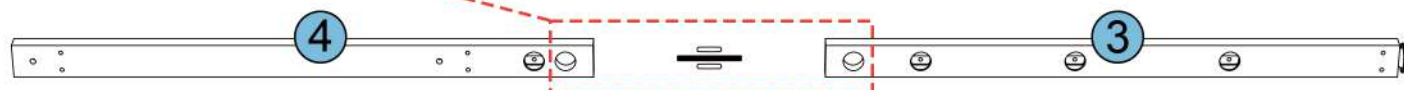
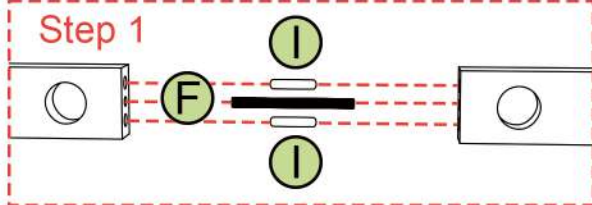
Note: Do not tighten screws until after all screws are in place.



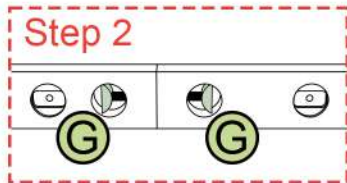
①	5mm	1
②	M8x20	8

02-1

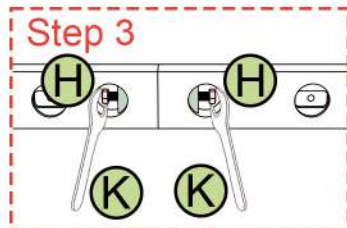
Step 1



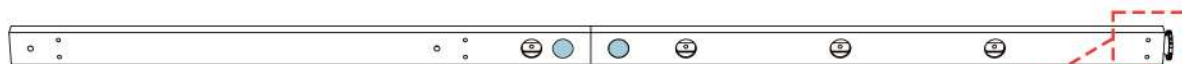
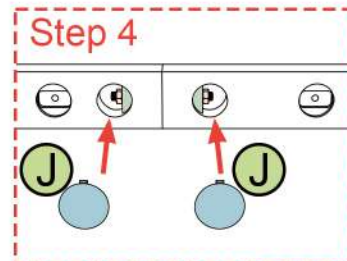
Step 2



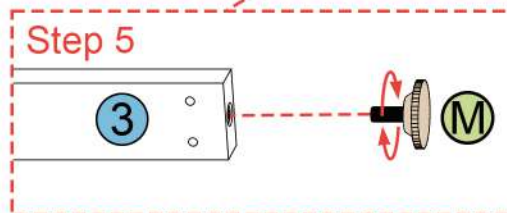
Step 3



Step 4



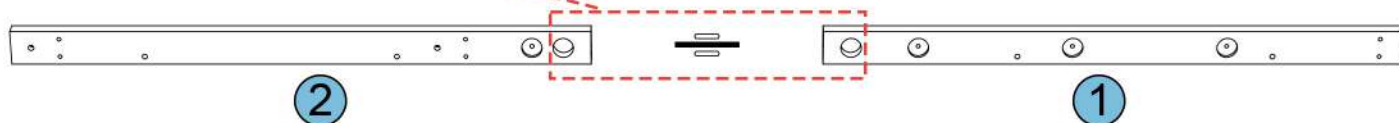
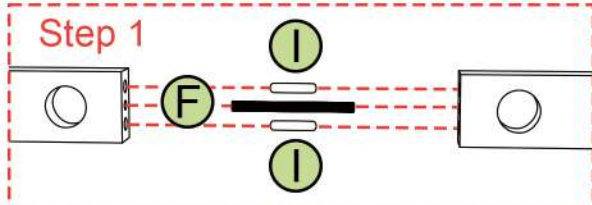
Step 5



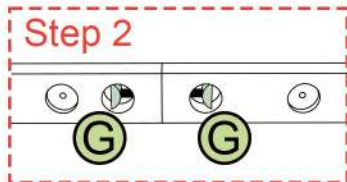
F	M8×100	1	G	M8	2	J	M35	2
I	M10×40	2	H	M8	2	K	13mm	2
			M	M10×25	1			

02-2

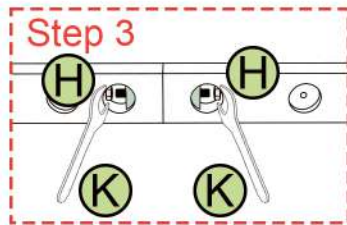
Step 1



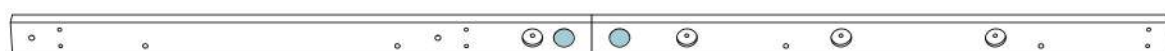
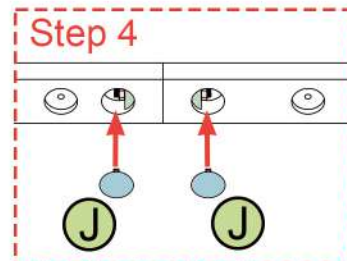
Step 2



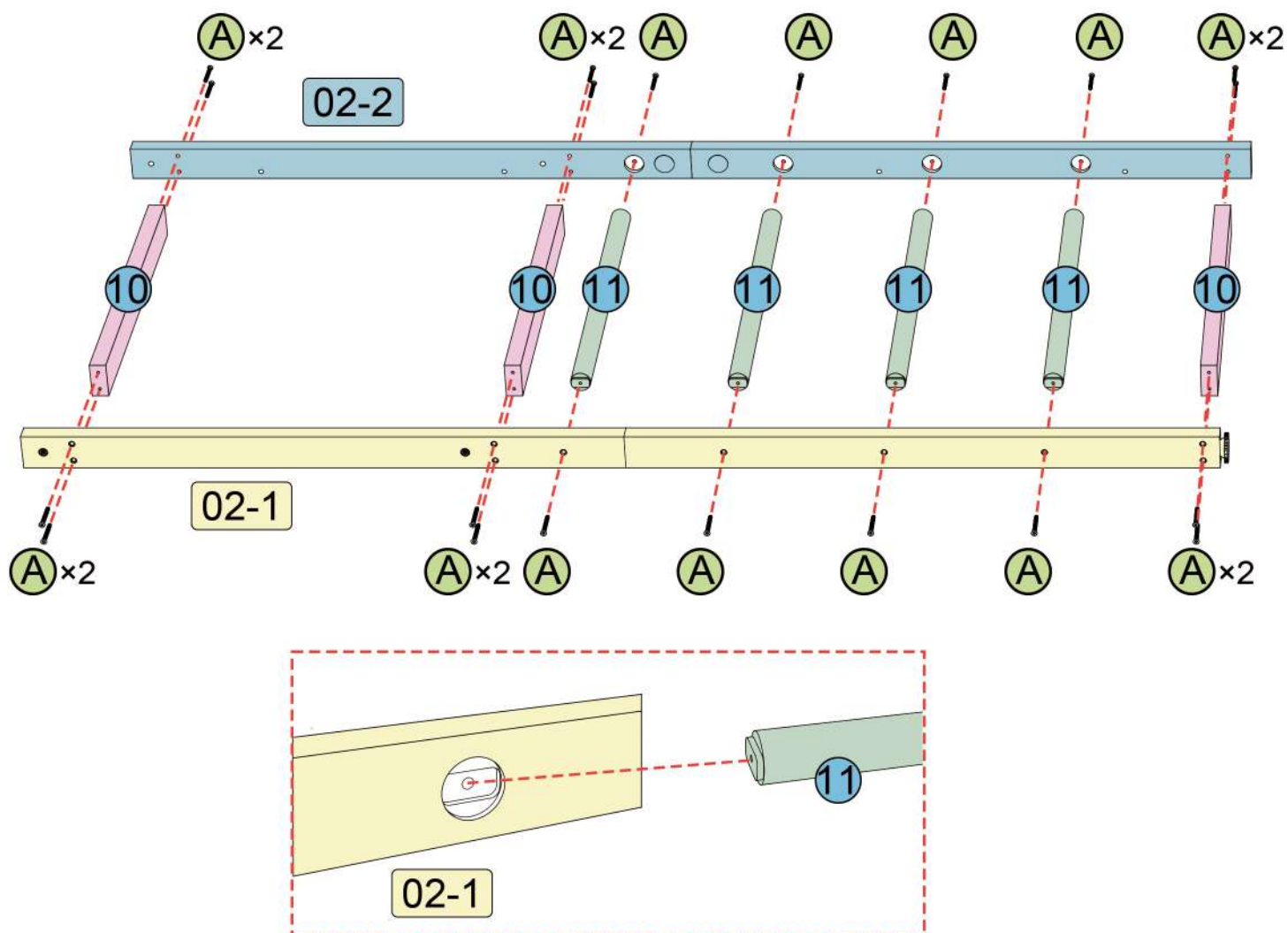
Step 3



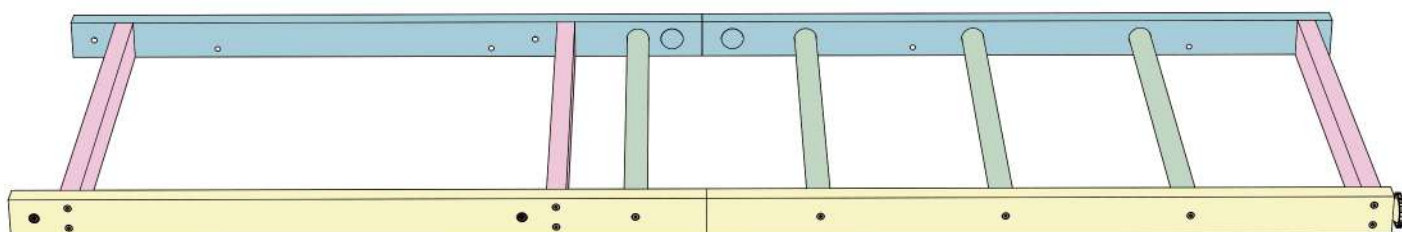
Step 4



F	M8×100	1	G	M8	2	J	M35	2
I	M10×40	2	H	M8	2	K	13mm	2

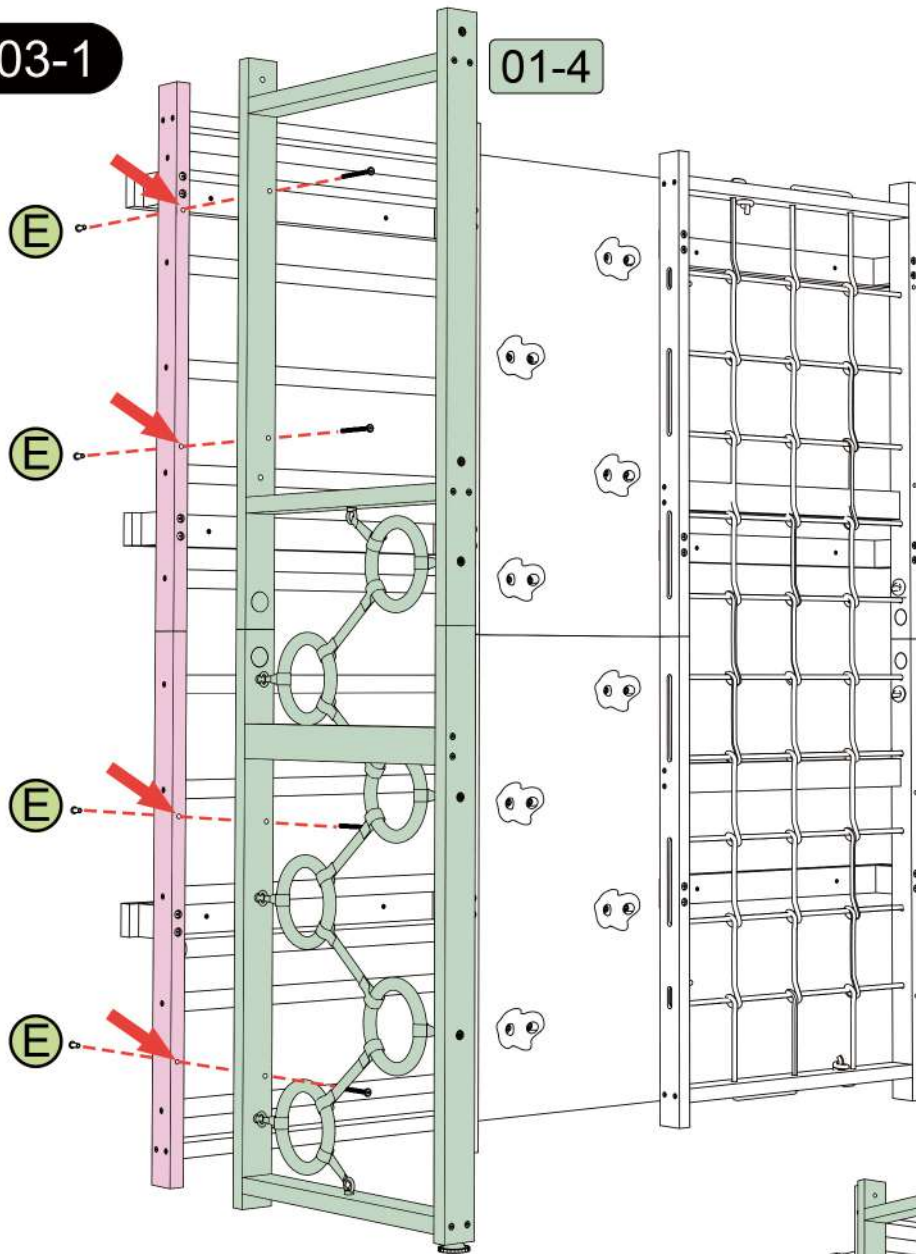


The protruding end of the part 11 needs to correspond to the hole of Section 02-1 when installed. Attach all screws for side 02-1 first and then attach side 02-2



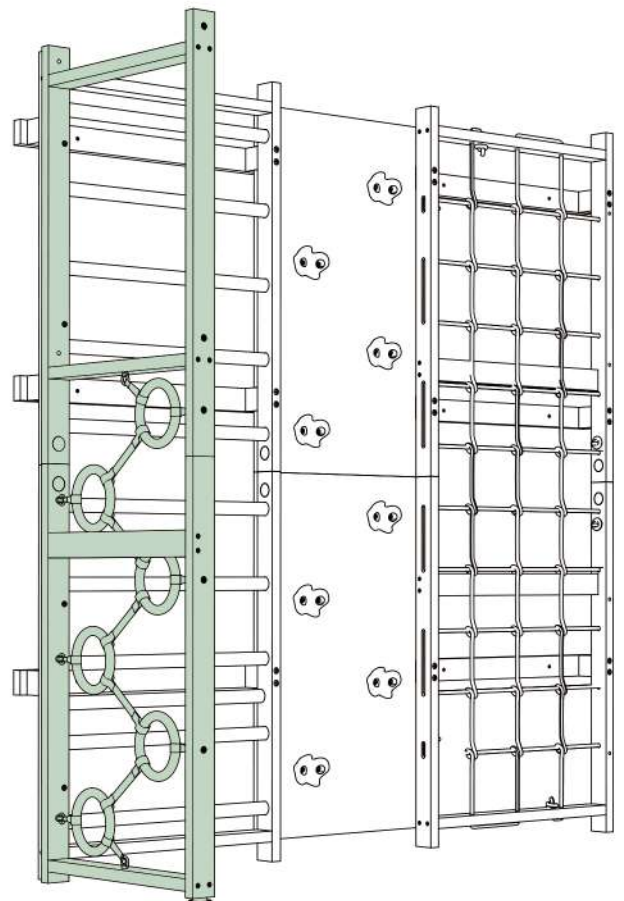
03-1

01-4

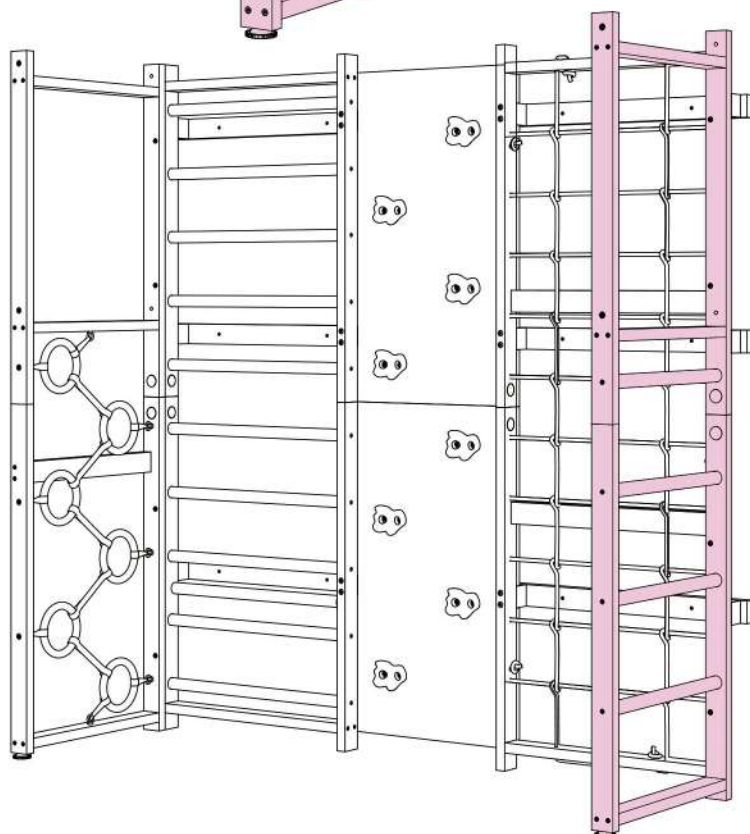
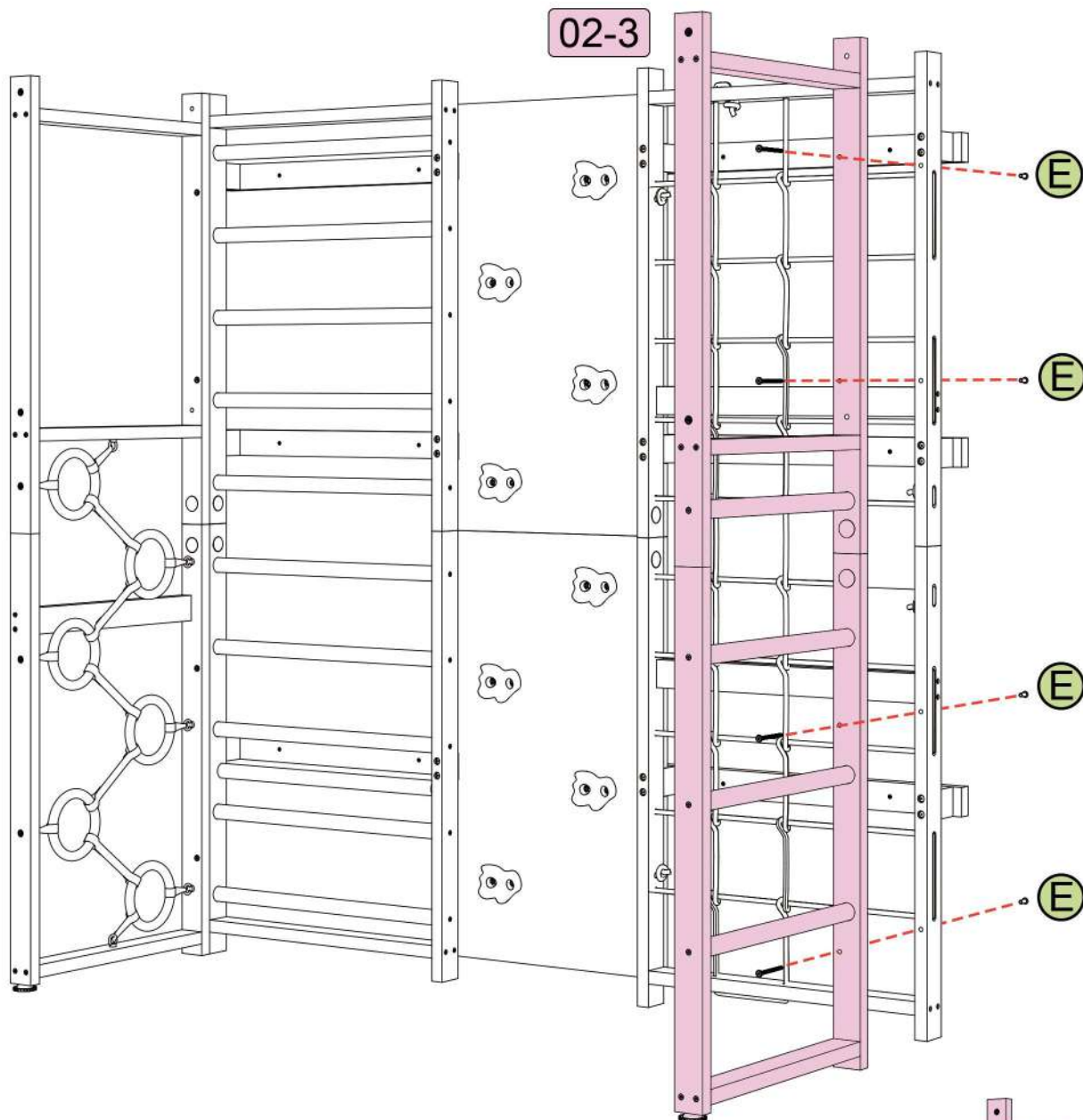


Step: Check for Pre-Drilled Holes on Walnut 79in Panel

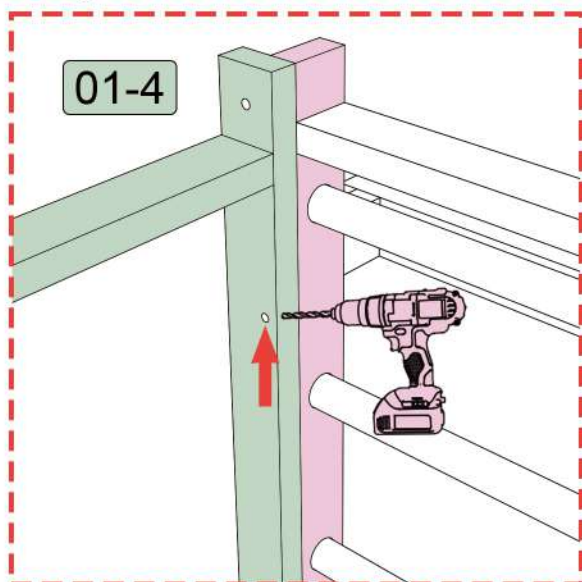
1. Inspect the Walnut 79in panel for the holes indicated by the arrows in the diagram.
2. If the holes are present:
 - Proceed to pages 5 and 6.
 - Use Screws **E** to complete the assembly as shown.
3. If the holes are NOT present:
 - Follow the redrilling instructions on pages 7 to 10
 - Then continue with the assembly as described.



E	M6×80 M6×20	4
L	4mm	2



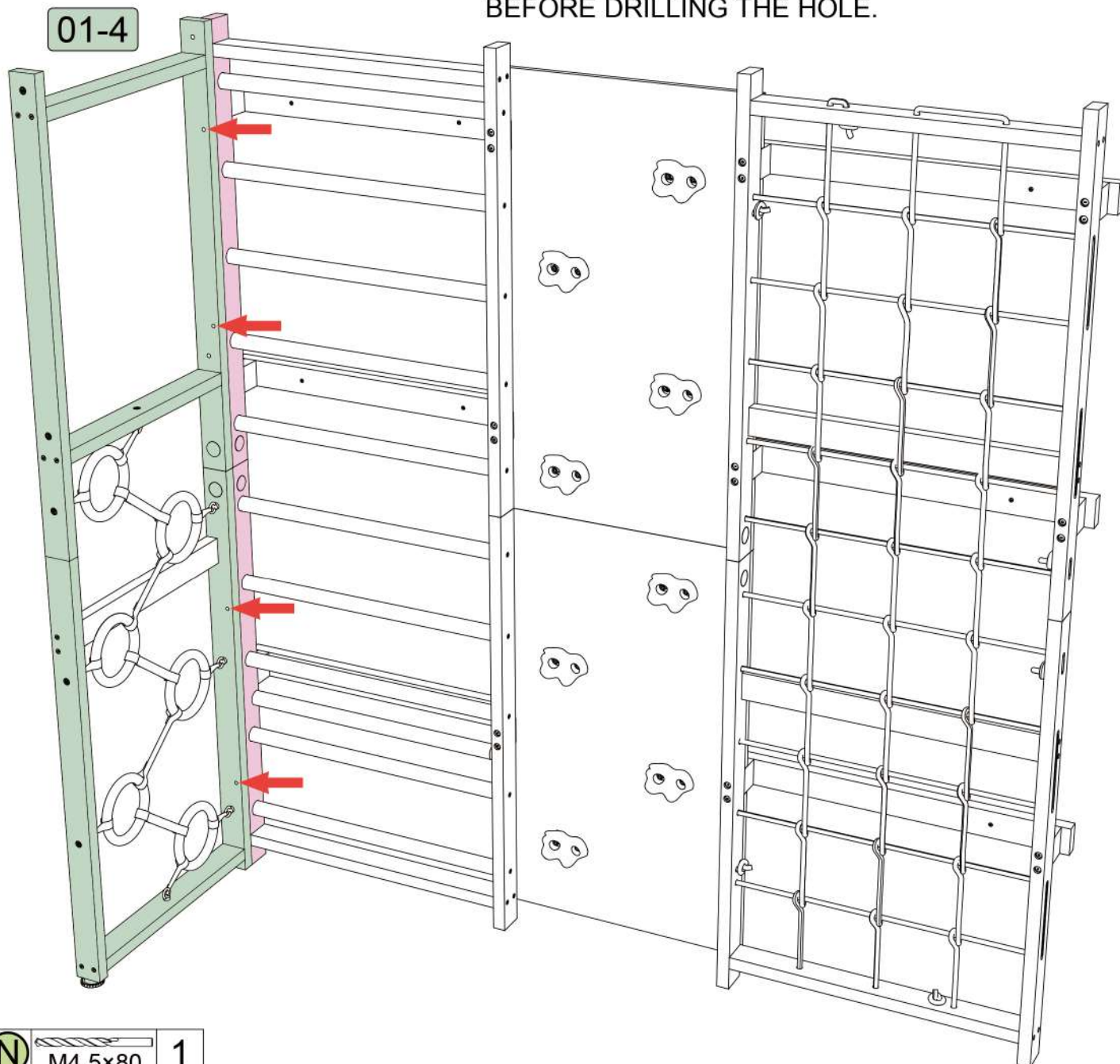
E	M6×80 M6×20	4
L	4mm	2



Step 1: Align the right side of (Section 01-4) with the pink wood as shown, ensuring that the hole indicated by the red arrow is at the center of the pink wood.

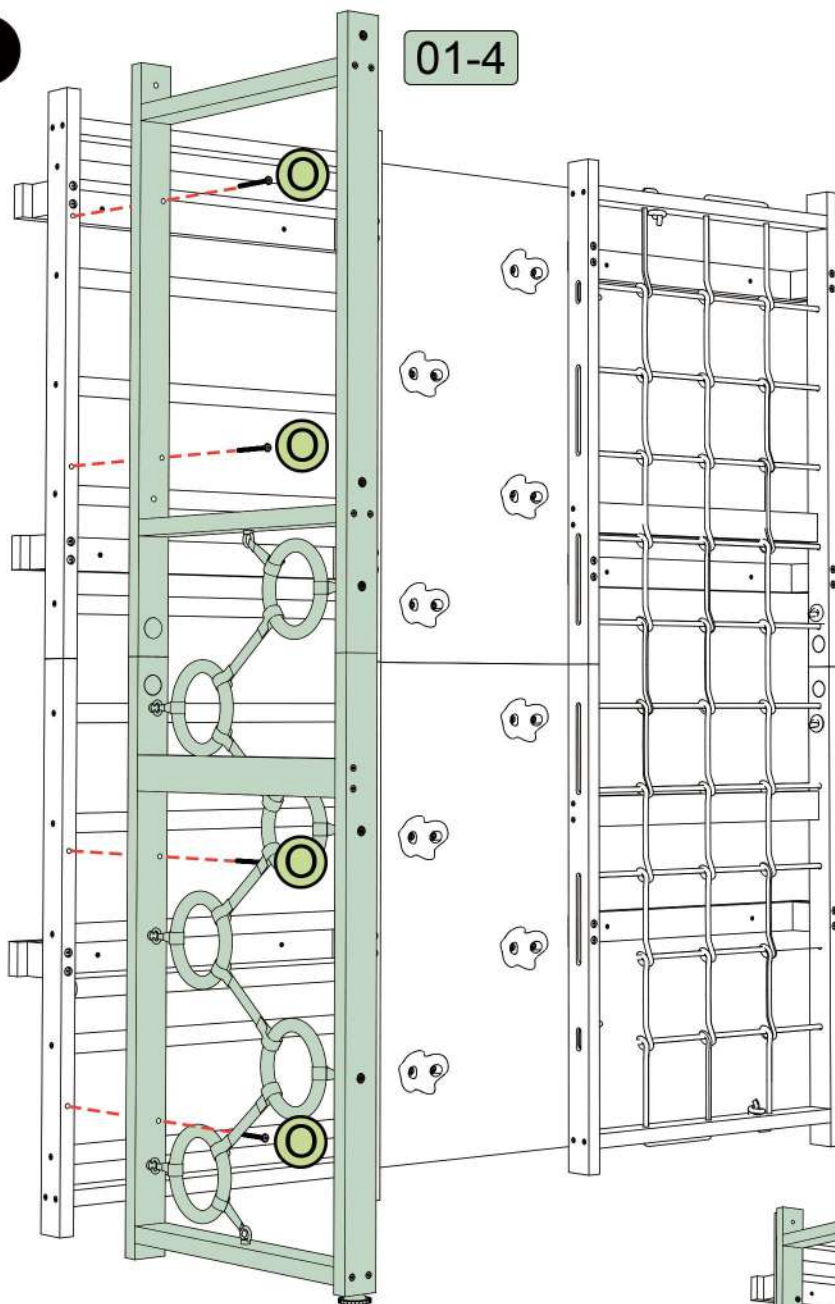
Step 2: Install twist drill bit N with a pistol drill, and drill a pilot hole in the pink wood through the hole marked by the red arrow in (Section 01-4) to facilitate subsequent screw installation.


PLEASE NOTE: WHEN ALIGNING THE SECTIONS TOGETHER MAKE SURE THEY ARE LEVELED BEFORE DRILLING THE HOLE.

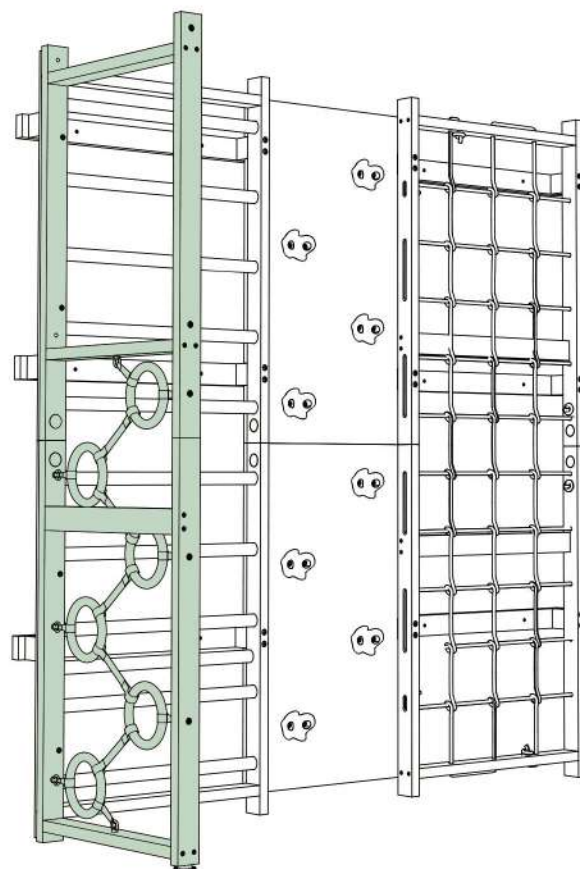


04-2

01-4



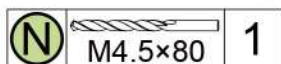
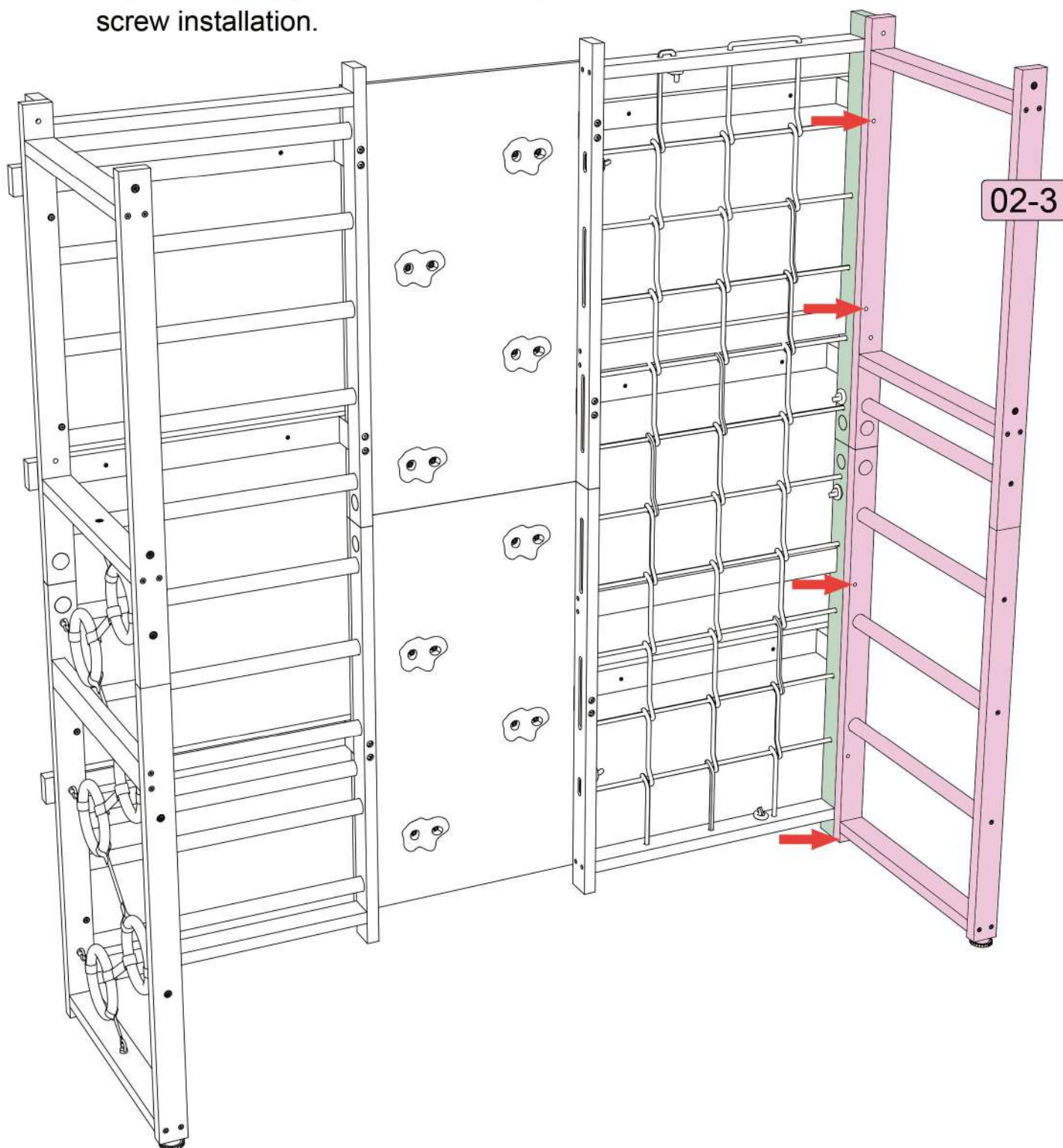
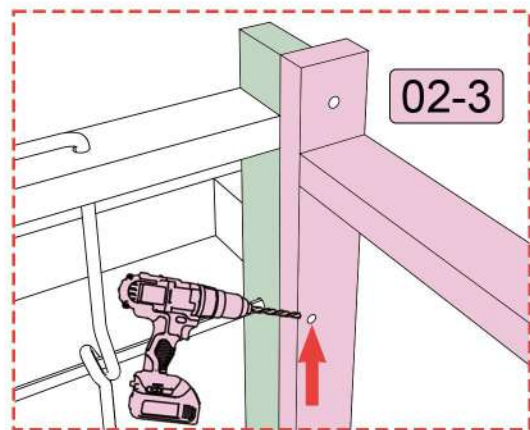
Step 3: Align (Section 01-4) with the pilot holes just drilled, and secure it with screws .

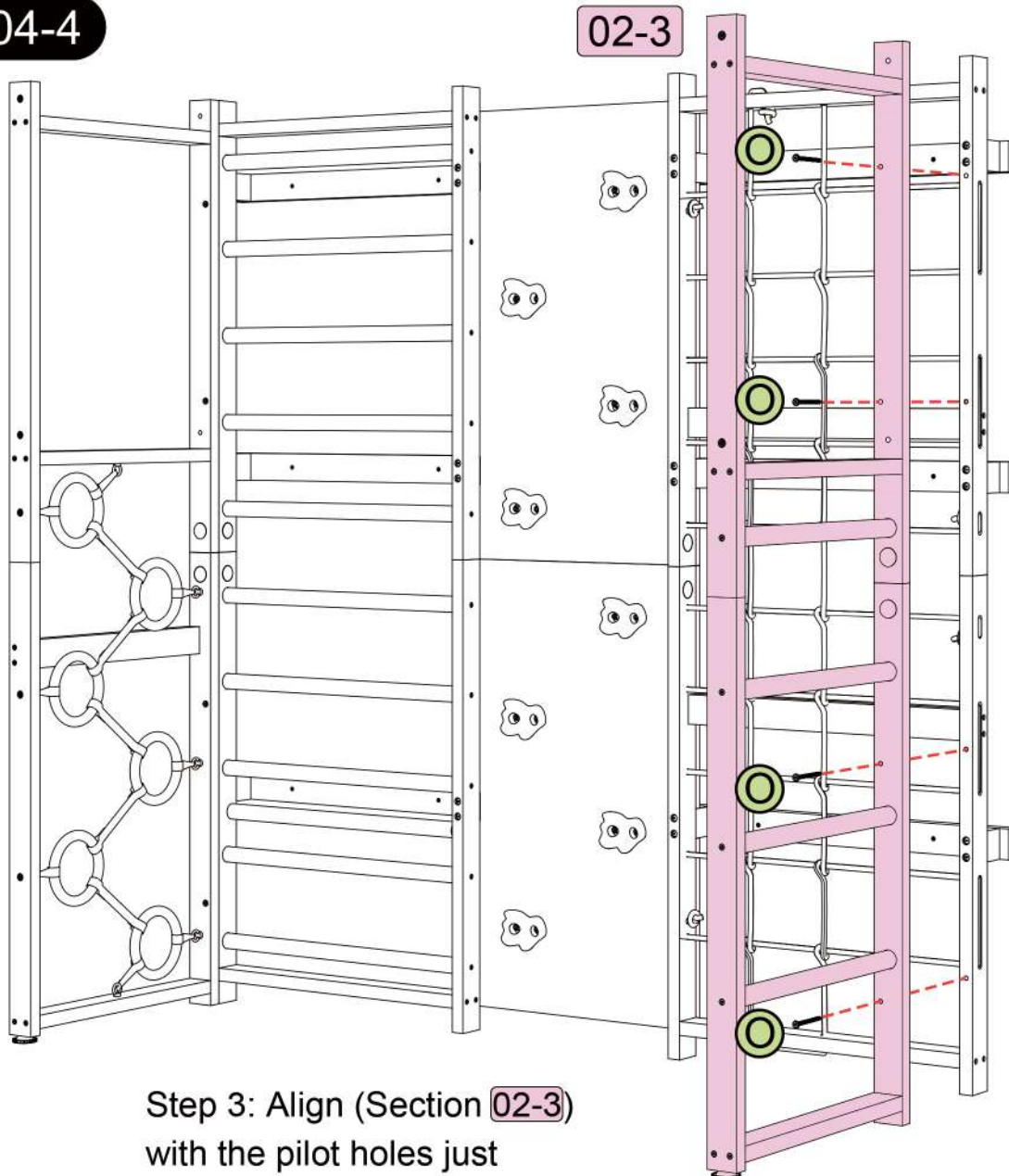



04-3

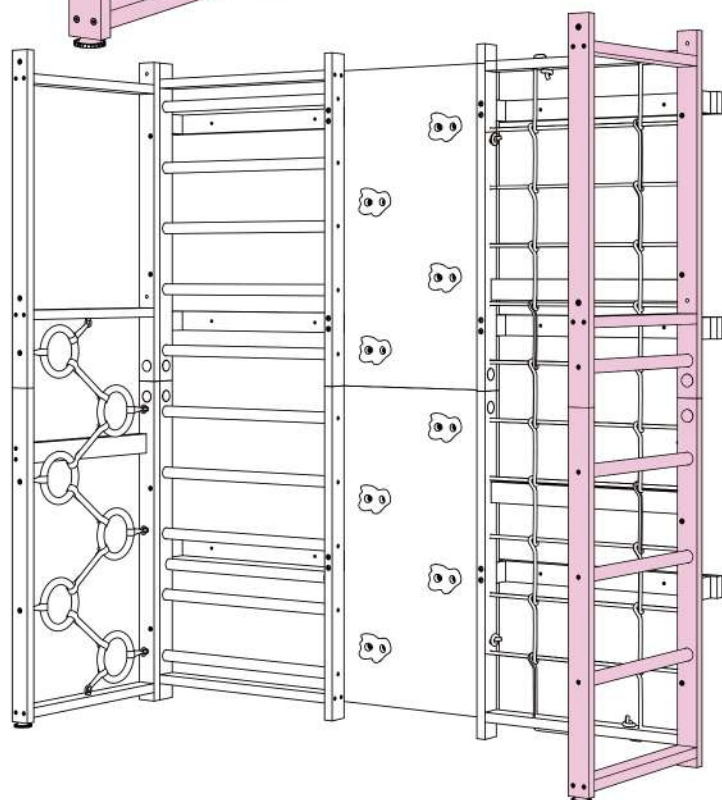
Step 1: Align the left side of (Section 02-3) with the green wood as shown, ensuring that the hole indicated by the red arrow is at the center of the green wood.

Step 2: Install twist drill bit N with a pistol drill, and drill a pilot hole in the green wood through the hole marked by the red arrow in (Section 02-3) to facilitate subsequent screw installation.





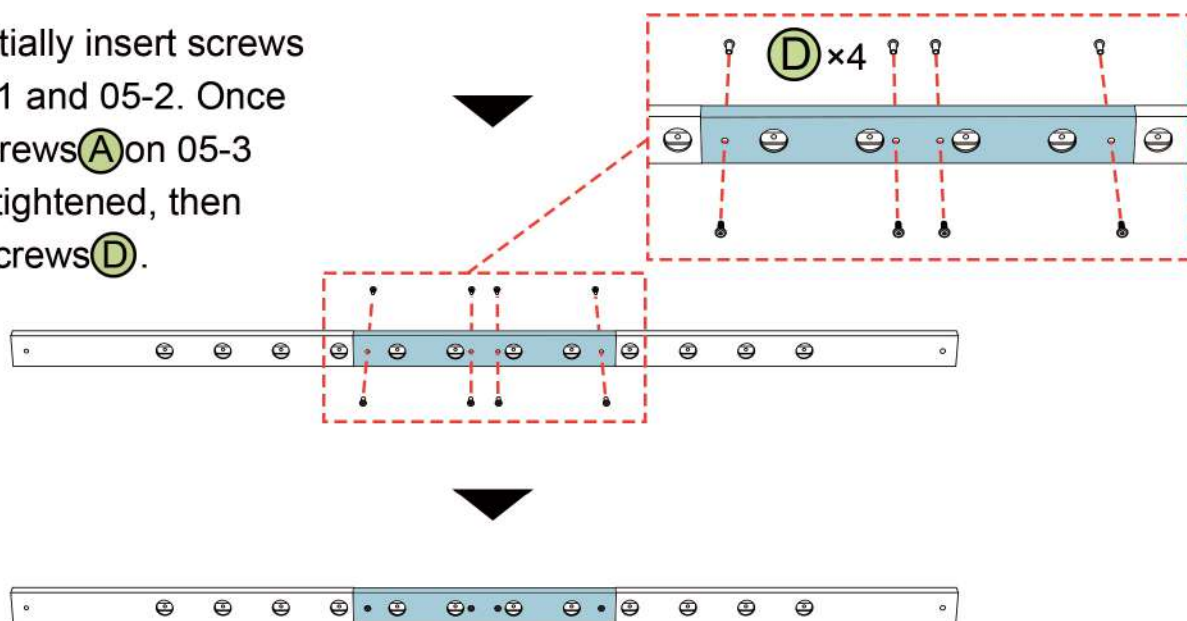
Step 3: Align (Section 02-3) with the pilot holes just drilled, and secure it with screws .



05-1

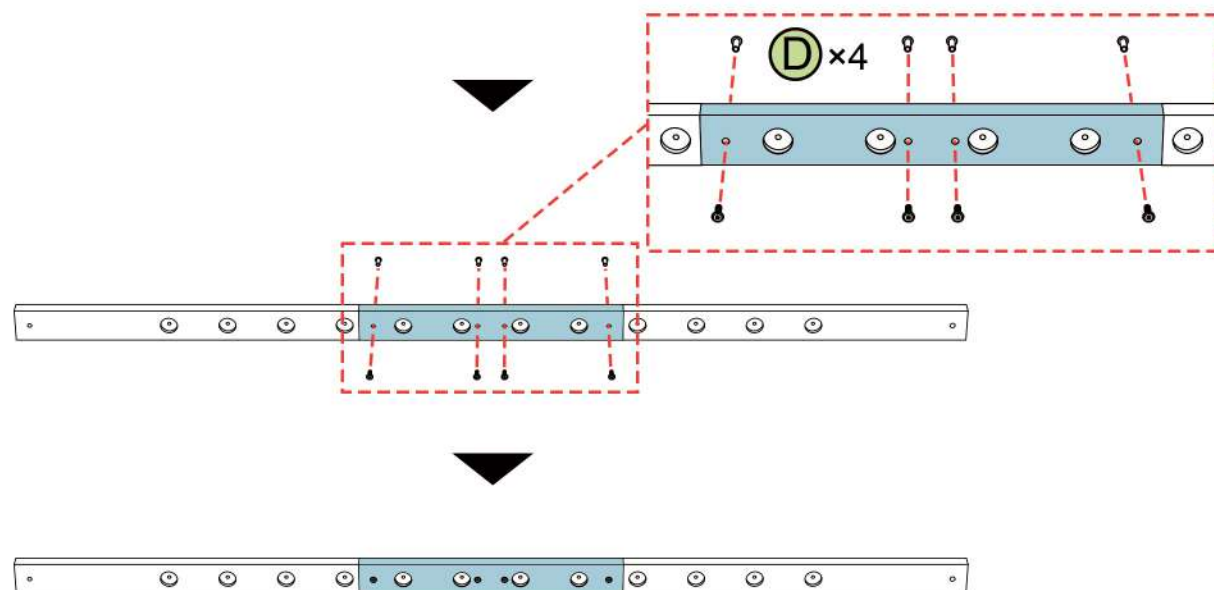


First, partially insert screws **D** on 05-1 and 05-2. Once all the screws **A** on 05-3 are fully tightened, then tighten screws **D**.

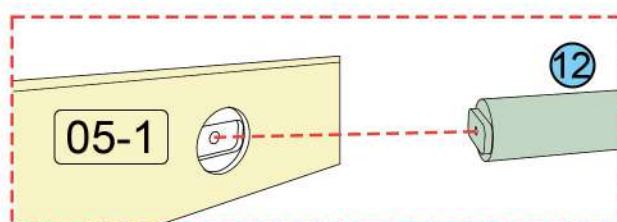
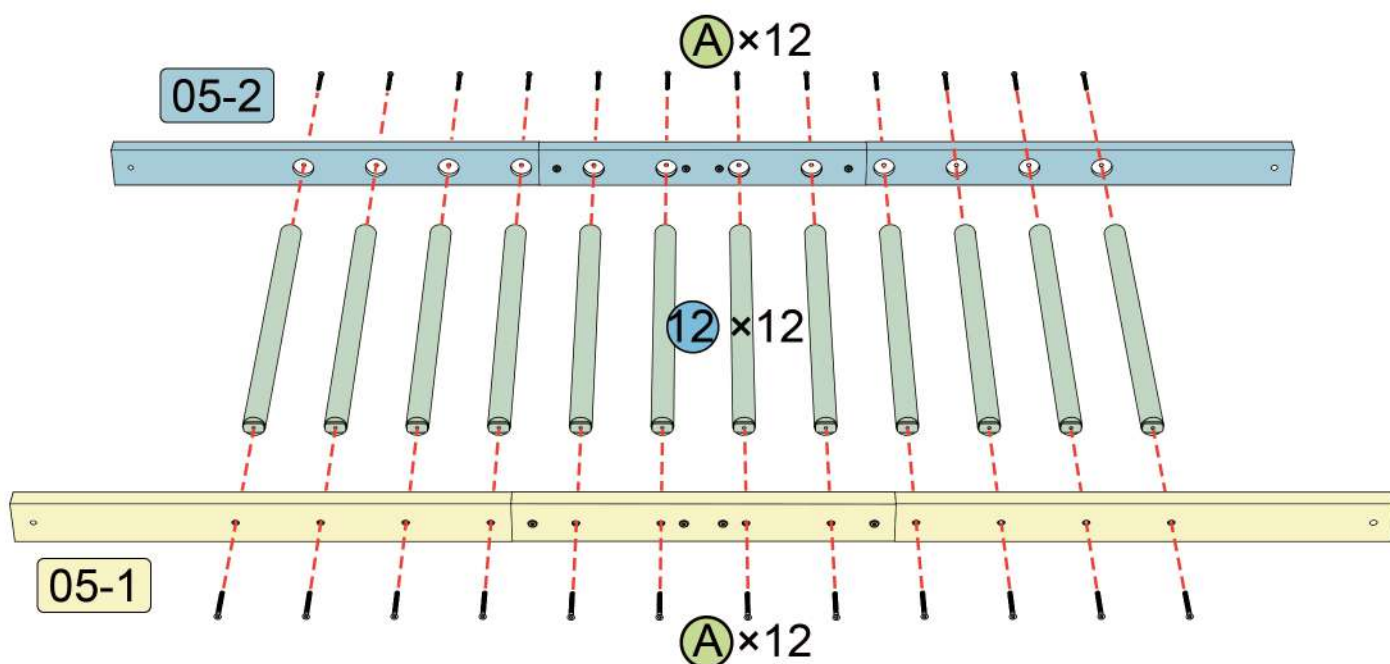


D	M6×20 M6×20	4
L	4mm	2

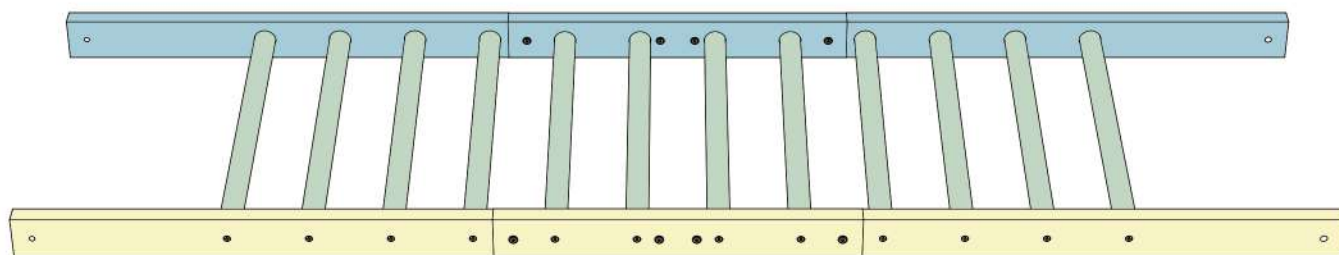
05-2

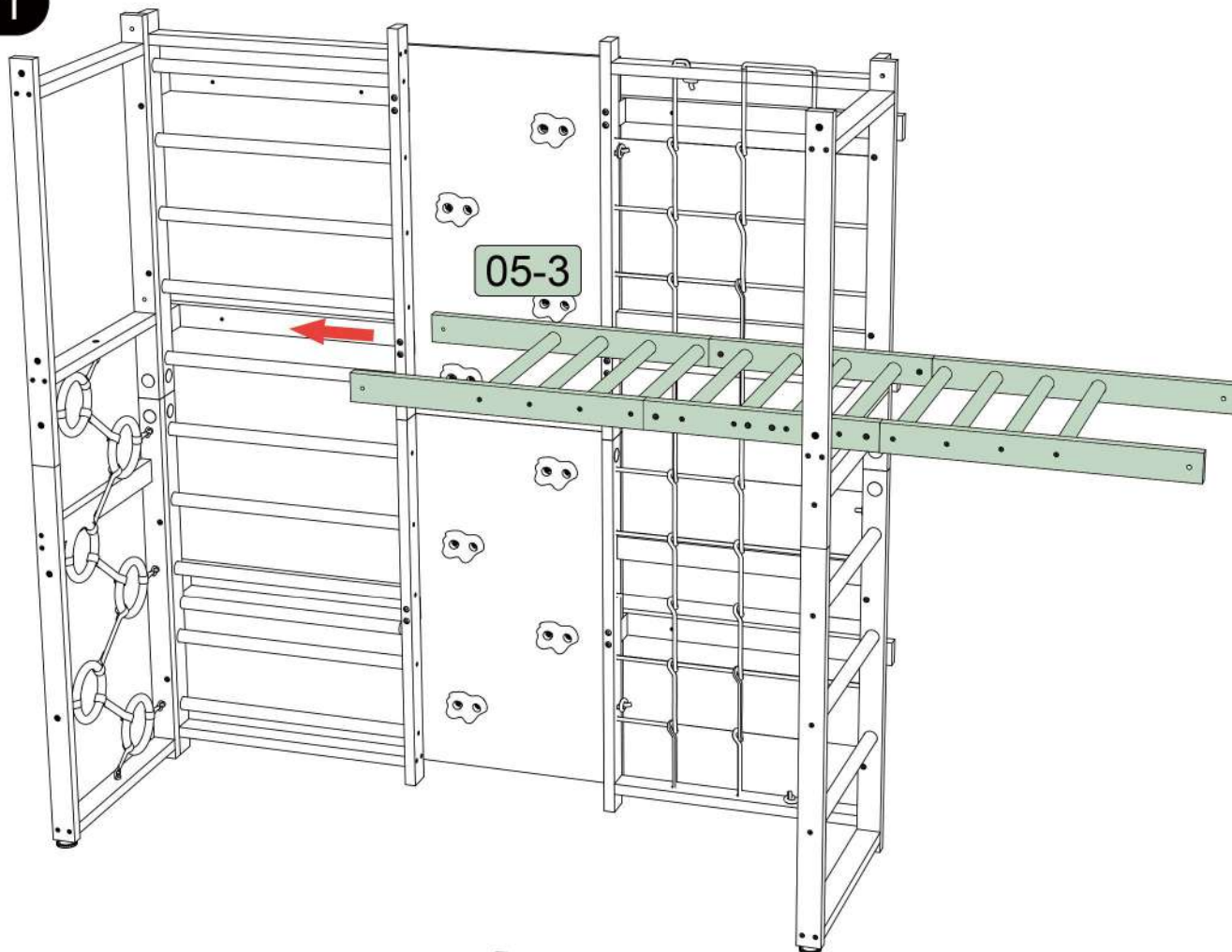


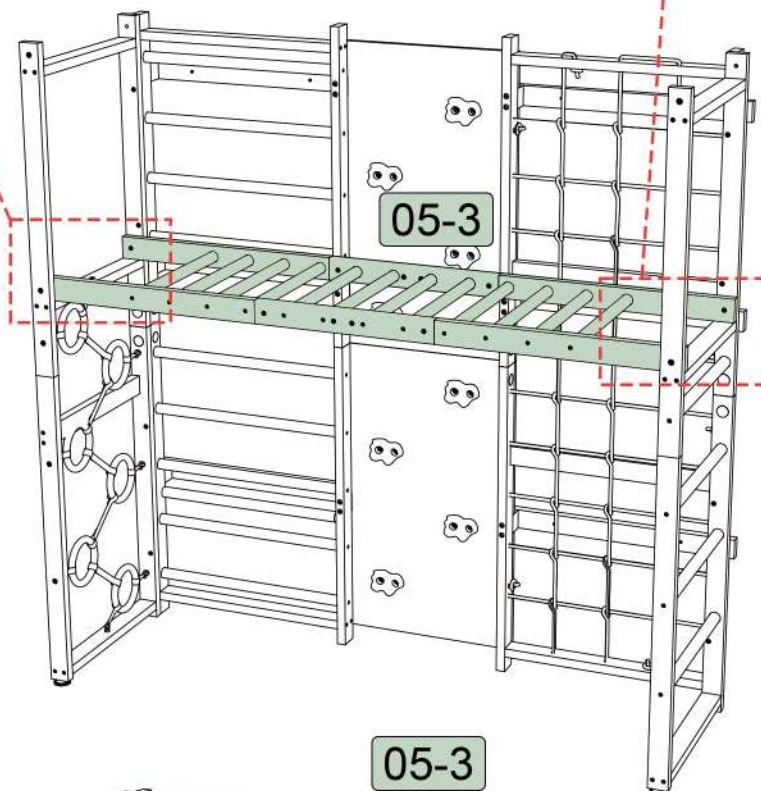
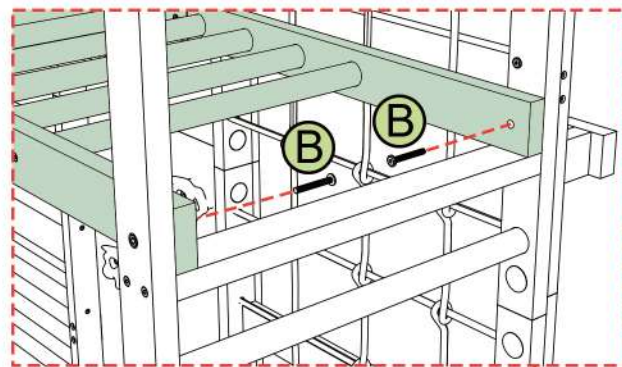
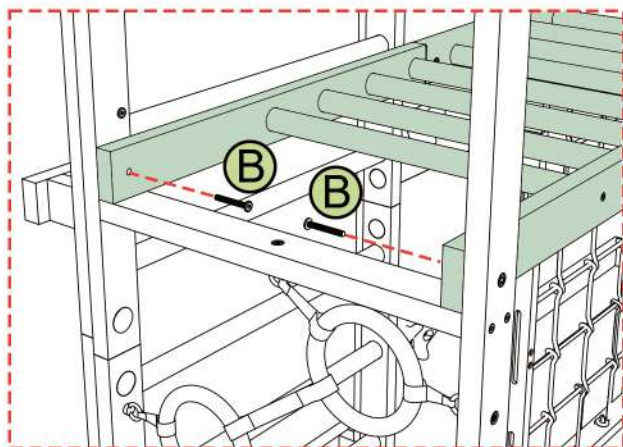
D	M6×20 M6×20	4
L	4mm	2




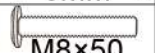
The protruding end of the part 12 needs to correspond to the hole of Section 05-1 when installed. Attach all screws for side 05-1 first and then attach side 05-2







Monkey bars can be adjusted to two different desired heights as shown in the diagram.

(P)		1
(B)		4

